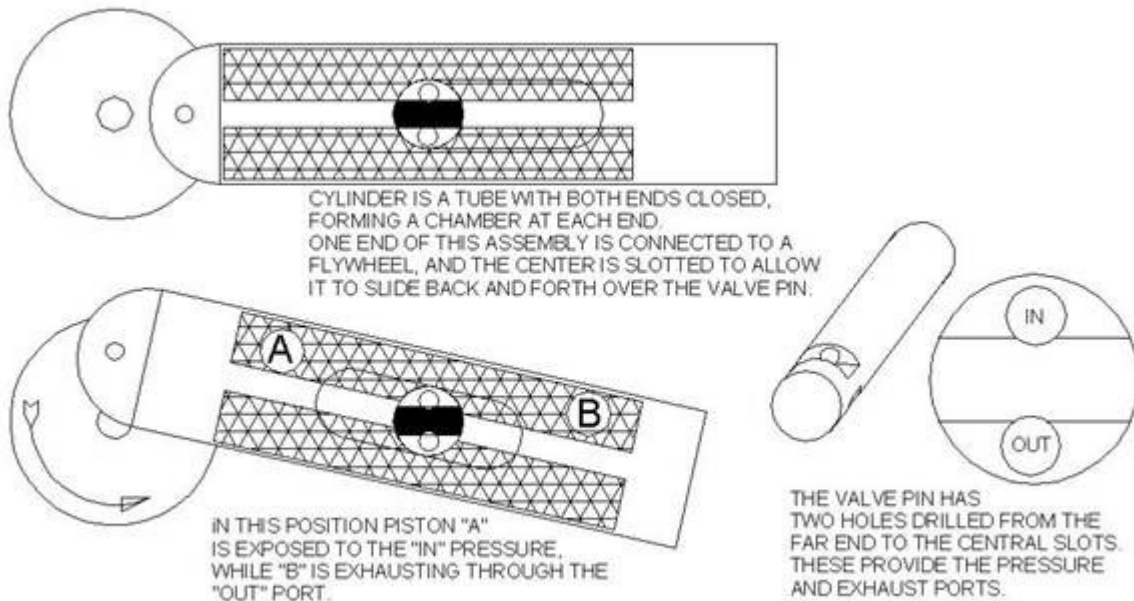


Steam Engine With Three Moving Parts

Build a two-cylinder steam engine with three moving parts. The cylinders are the closed ends of a single piece of tubing, slotted to clear the valve pin. One end of the tube is fitted with a connection to the flywheel. The flywheel rocks the cylinder/ piston assembly back-and-forth, alternately exposing pistons to the pressure and exhaust channels in the valve shaft.



- Pistons 'A' and 'B' are a single piece,
- They inhale and exhale through tubes in the valve pin
- They pivot at the center of a stationary valve pin

We need more experimenters who do not hide what they discover and prove, but give freely of the creativity and gifts that God has given them. Stand on my shoulders. We desperately need some appropriate technology products to fill this need. Don't tell me about perpetual motion, mysterious magnetic things, motors that run generators that run motors, or things that go "Tesla" in the dark. If you actually build something that produces a power output, and you can show me a working model, and if other people can build it and make it work, and if it requires nothing that you cannot find in a small town, then you will have a potential contribution.